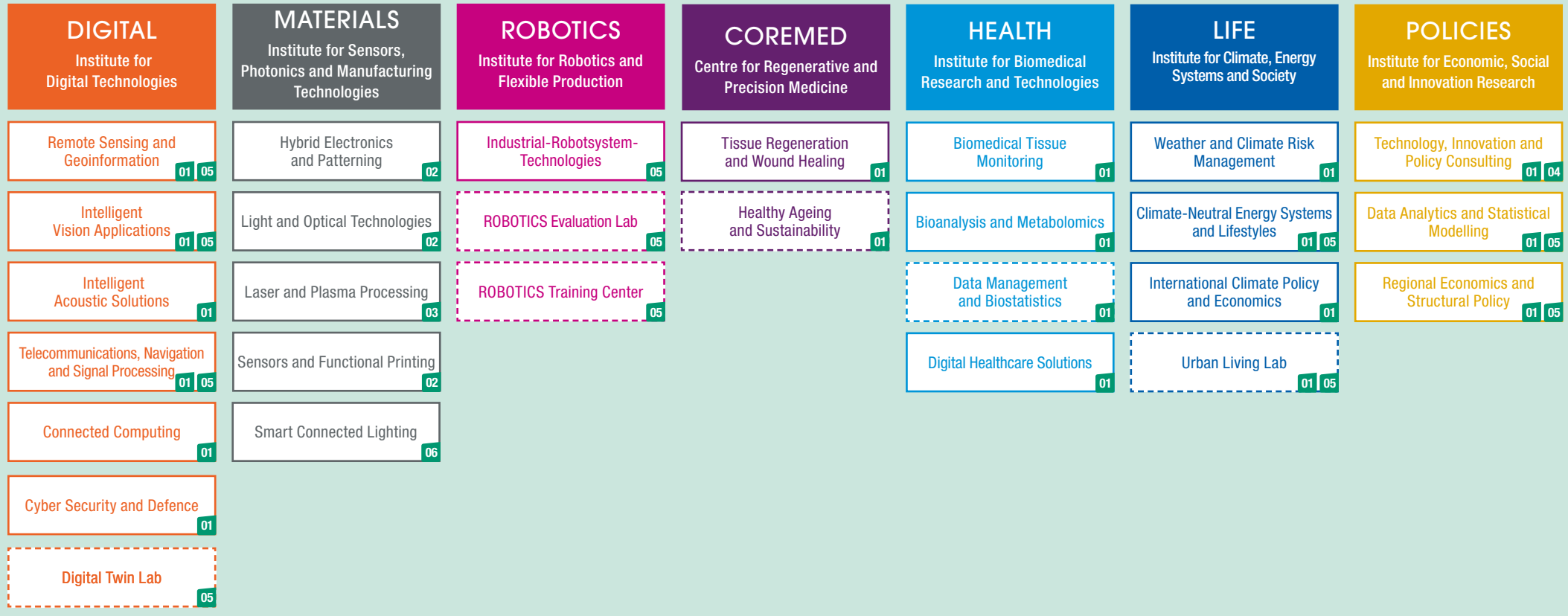


JOANNEUM RESEARCH Forschungsgesellschaft mbH

Executive Board and Corporate Staff

Research Units



Locations: 01 Graz 02 Weiz 03 Niklasdorf 04 Vienna 05 Klagenfurt 06 Pinkafeld

Equity Holdings

Affiliated Company

- JR-AquaConSol GmbH

Shareholdings

- DIH SÜD GmbH
- EPIG GmbH
- FH JOANNEUM Gesellschaft mbH
- Holz.Bau Forschungs GmbH
- Human.technology Styria GmbH

Commercial utilization/Spin-offs

- ALP.Lab GmbH
- decide Clinical Software GmbH
- Geo5 GmbH
- Pacemaker Technologies GmbH

Shareholdings COMET-Centres

- ACIB GmbH
- BEST – Bioenergy and Sustainable Technologies GmbH
- CBmed GmbH
- Know-Center GmbH
- Virtual Vehicle Research GmbH
- Materials Center Leoben Forschung GmbH
- Polymer Competence Center Leoben GmbH
- Research Center Pharmaceutical Engineering GmbH